

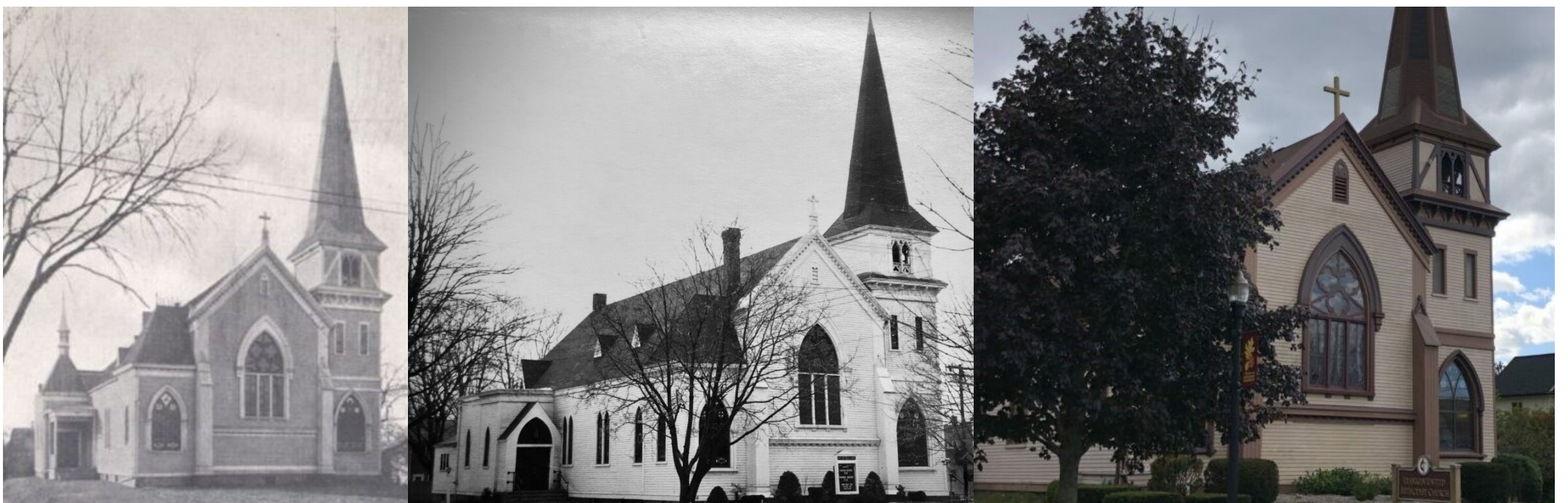
# Defining Our Generation AND OUR FACILITY

The first Methodists gathered in the Franklin Town Hall, in 1853. Unfortunately, after just a few years, the class was discontinued. In 1871, the cause was taken up again, a pastor was appointed, and soon thereafter, in 1872, a building was constructed. It was dedicated on June 23, 1873. For over 170 years, each new generation of Methodists has had to recommit to the cause and give of themselves to sustain the church in Franklin. We stand as heirs to their dedication and hard work in establishing and maintaining the church. It has not always been easy, but each generation has been up to the task. Now is our turn.

We seek to be “a community where all can experience meaningful relationship with God, grow in Christ, and reach out in love to others; a community where all can love and be loved; a community where people can be accepted as they are.” This vision propels us forward as we seek to give of ourselves for the sake of the community around us; however, the current state

of the building is limiting and creates several challenges. The roof needs to be replaced. The balcony and basement are underutilized spaces due to accessibility constraints. The HVAC system does not condition air nor does it circulate fresh air through the entire building. The kitchen, vestry, and bathrooms need to be updated. Financial reserves must be established to support future ministry and facility needs. Our commitment to addressing these issues will not only define our generation, it will also impact the many generations of Franklin Methodists yet to be.

Now is our time to rise to the challenges of our day. Now is our opportunity to honor the sacrifices of our spiritual forebears by rededicating ourselves to the cause so that a new generation can learn to love God, love neighbor, and be the church.



## Defining Our Generation AND OUR FACILITY Phase I

2019-2023

For over 150 years, our facility has been a place where people have gathered to nurture a meaningful relationship with God and grow in Christ. It is a place from which generations of faithful Methodists have reached out in loving concern to others.

From 2019-2023 we responded to several major issues with our facility that caused disruptions to worship and threatened our ability to serve others. By the grace of God and the generosity of past members, we have been able to address all of these issues and make plans for future renovations and restorations which will help ensure that future generations of Methodists will have 1) a place to worship and 2) a well-appointed building from which they can serve others.

### MAJOR REPAIRS & IMPROVEMENTS

- Fire Alarm Testing & Emergency Light/Sign Upgrade (\$5,360)
- Organ Repair—swell, 8' diapason (\$2,800)
- New Boiler (\$22,175)
- Bathroom Vanity (Basement) & Plumbing Repair (\$1,878)
- Main Sewer Line Repair (\$12,475)
- Securing the Basement / Door Locks (\$3,259)
- New Roof (\$63,000)
- Insulate Attic & Crawl Space (est. \$15,000)
- Update Sanctuary Lighting to LED (est. \$1,500)

### PREPARING FOR PHASE II +

- Architectural Design (\$10,700)
- Capital Campaign Consultant (\$21,500)

# Defining Our Generation Phase II

AND OUR FACILITY

2024-2026

Buildings within the United Methodist tradition are consecrated for the worship of God and the service of all people. Phase II seeks to restore and renovate the primary gathering space in the facility so that the congregation and community can gather comfortably and the building can be used for its consecrated purpose.

Phase II will focus on the renovation of the sanctuary, improving the air-quality in the building, and increasing the endowment.

Acoustic tiles in the sanctuary are beginning to sag and fall. The carpet needs to be replaced. And, improvements need to be made for the accessibility and flexibility of the worship space. The HVAC system is inefficient and limited. Updates to this system will help reduce the humidity in the building and improve indoor air quality by circulating fresh air into the building. The final focus of this phase looks to increase the endowment so that the church can generate perpetual, long-term revenue to sustain the church's mission and vision.

Phase II focuses on making our facility more comfortable and viable in the 21st century for its consecrated purpose: worship and the service of all people.

## SANCTUARY RENOVATION

- Organ Protection
- Repair Sanctuary Ceiling
- Restore Sanctuary Floor
- Install New French-Style Entry Doors
- Light Stained-Glass Windows

## HVAC & AIR QUALITY

- Update HVAC on Main Floor & Second Floor to include circulation of fresh air into facility.

## INCREASE THE ENDOWMENT

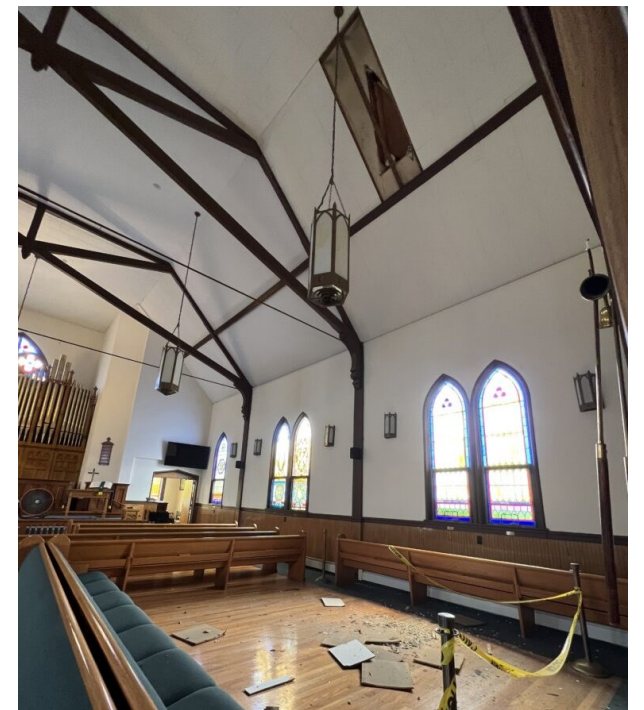
- Increase Endowment by at least 150%

### FUNDRAISING GOAL FOR PHASE II

# \$300,000



The sanctuary decorated for Christmas 2022.



On July 1, 2023, a large section of ceiling tile failed leaving a large hole in the sanctuary ceiling.



On September 11, 2023, the historic tracker organ in the sanctuary, installed in 1905, was partially disassembled—all exposed pipes removed—and the entire case covered in plastic to protect it from falling debris and dust.



The sanctuary was closed for worship in July and remained closed through the end of 2023. Christmas 2023 was celebrated in the vestry.

# Defining Our Generation Phase III

AND OUR FACILITY

beginning 2025

In its 150-year history, our facility has only seen one major expansion. A century ago, the church added new classrooms and a kitchen to the rear of its 1870s structure, enhancing its educational programs and fellowship opportunities. With Phase III and Phase IV, the church aims to achieve similar goals.

The current facility struggles to meet the standards set by the Department of Early Education and Care (EEC) and the Americans with Disabilities Act (ADA). The classrooms are cramped, there are not enough bathrooms, and the lower-level is not air-conditioned, has poor air-flow, and is excessively damp in spring and fall.

Phase III will radically update the church's infrastructure: expanding the footprint of the building to include ground-level entry, a lift, and a new church office; renovating the lower-level with upgrades that will make it more welcoming and functional for education in the 21st century; adding two new multi-use rooms to the main-level; and expanding the HVAC system to improve air quality and control moisture in the lower-level.

In August of 2024, the Franklin UMC signed a long-term partnership with Aprende Spanish Immersion. Construction for Phase III is slated to start in Spring 2025, with Aprende opening its new location in Fall 2025.

These exciting changes will provide a beautiful, modern and expanded space for education and community that is fully accessible on both the lower- and main-levels of the facility.

## LOWER-LEVEL RENOVATION

- Renovate to meet current Department of Early Education and Care (EEC) standards
- Install a sink in each classroom
- Create two restrooms that meet Americans with Disability Act (ADA) standards
- Increase Storage Space

## NEW ENTRYWAY

- Create ground-level entry into building
- Install lift to lower-level and main-level to meet Americans with Disability Act (ADA) standards.
- Create a fenced in play area adjacent to new entryway

## HVAC & AIR QUALITY

- Dehumidify & Air Condition Lower-Level

## MODIFIED MAIN-LEVEL

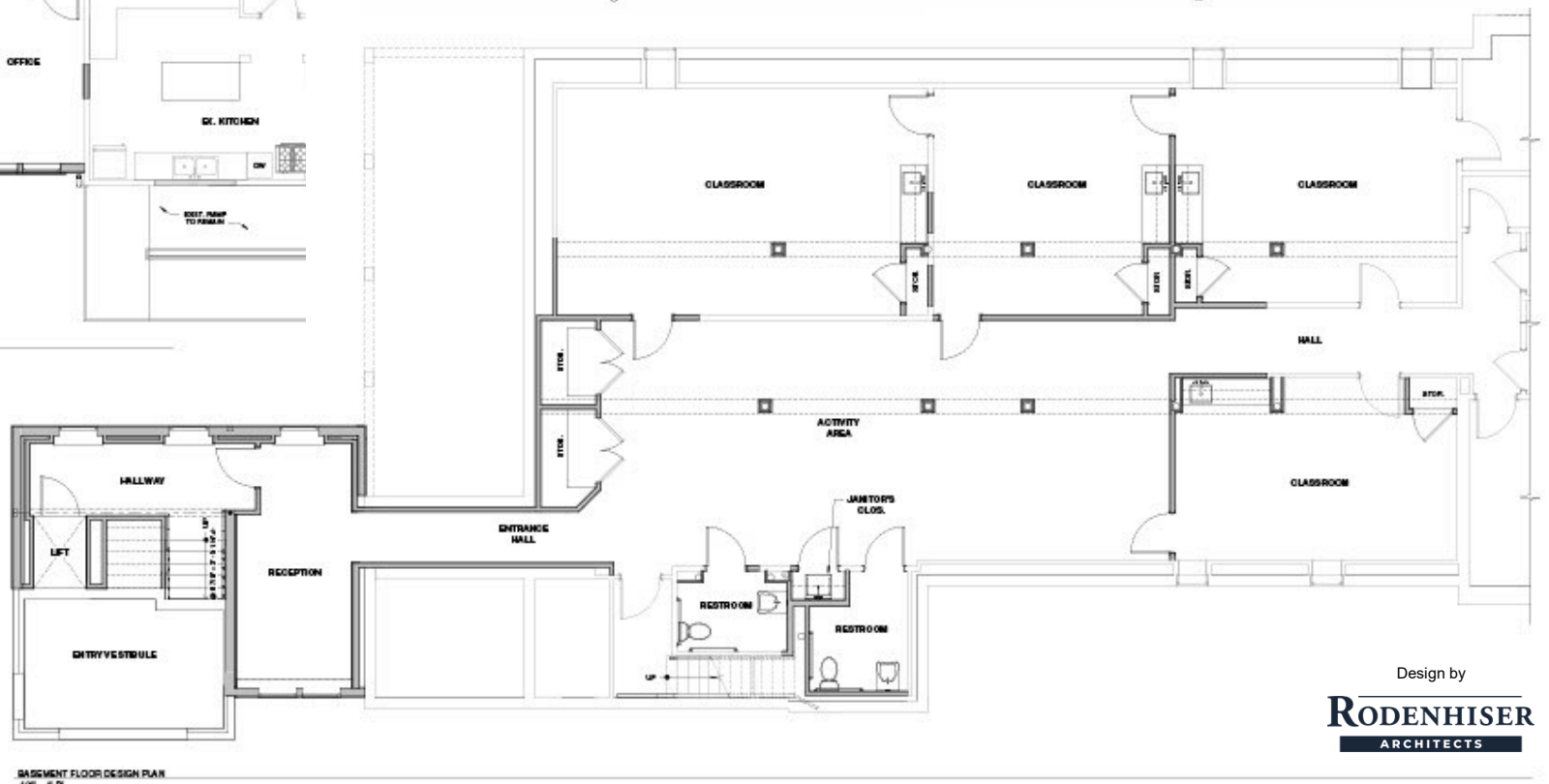
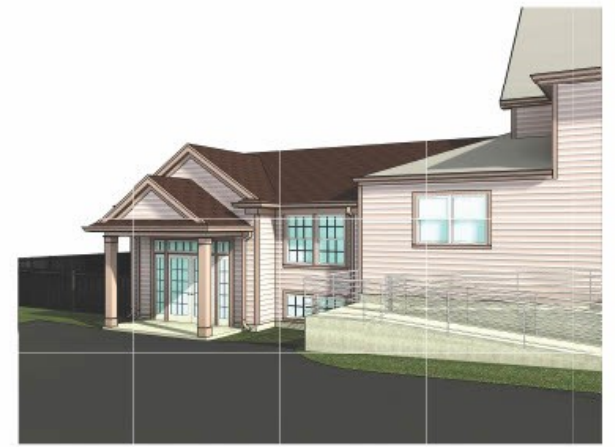
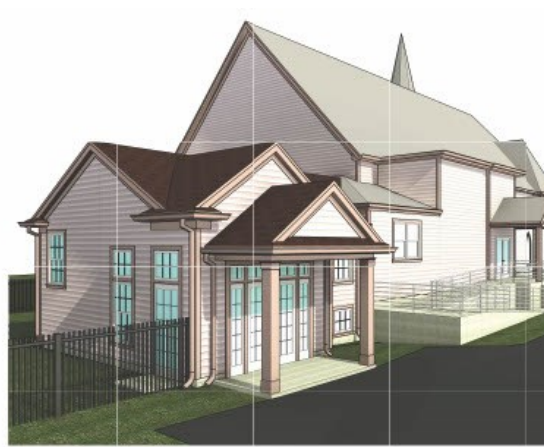
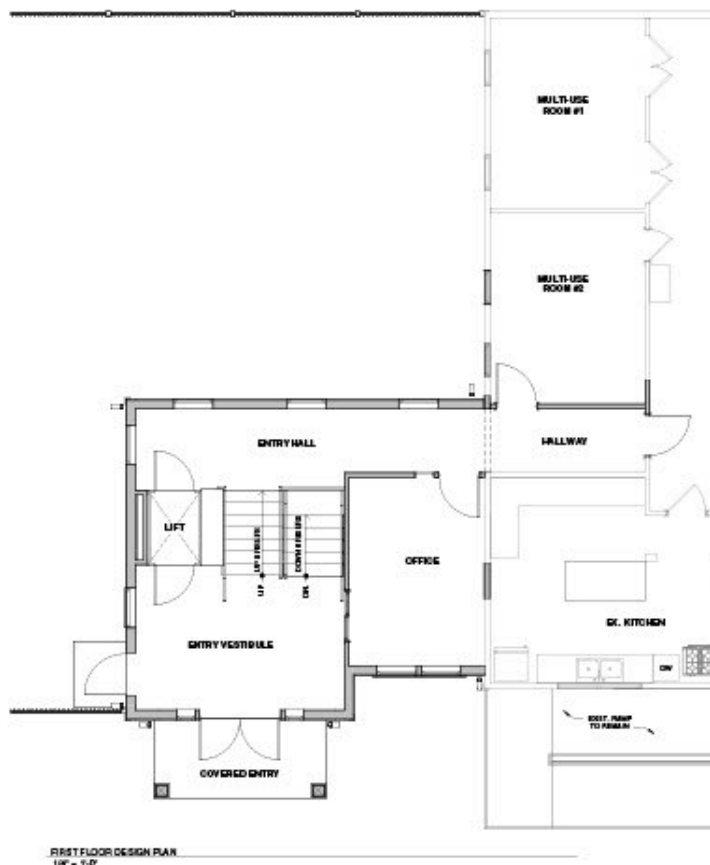
- Create two new multi-use rooms off the Vestry
- Create a new Main Office overlooking the New Entryway
- Move the Pastor's Office adjacent to the Sanctuary

## PREPARING FOR PHASE IV +

- Architectural design for Phase IV and beyond
- Rough-in plumbing for kitchen and bathrooms in Phase IV +

**THE PRELIMINARY DESIGNS BELOW WERE APPROVED BY CHURCH COUNCIL ON NOVEMBER 10, 2024.**

A CONGREGATIONAL VOTE FOR FINAL CHURCHWIDE APPROVAL IS ANTICIPATED IN JANUARY/FEBRUARY 2025. GROUND BREAKING IS EXPECTED BY SUMMER 2025.



  
**iAprende!**  
SPANISH IMMERSION  
NEW LOCATION  
OPENING FALL 2025

Design by  
**RODENHISER**  
ARCHITECTS